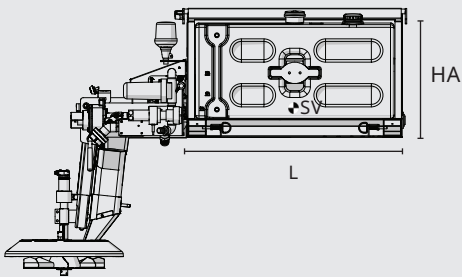
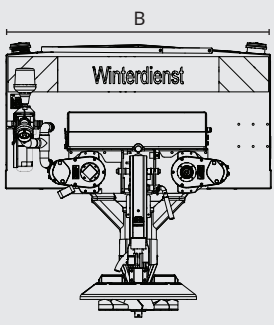
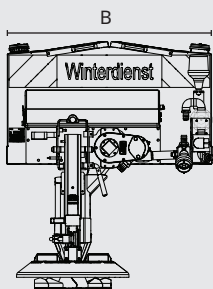
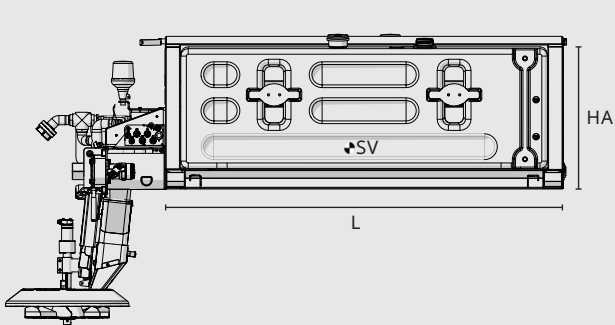


V-spreader



W-spreader



Technical data		W04	V05	W07	V08	V10	W10
Hopper volume, dry medium	m³	0,4	0,5	0,7	0,8	1,0	1,0
Hopper volume, brine	l	-	200	-	430	430	-
Hopper length [L]	mm	850	1.200	1.200	1.790	1.790	1.450
Overall length without brine [B]	mm	1.080	1.200	1.200	1.040	1.200	1.200
Overall length with brine [B]	mm	-	1.200	-	1.040	1.200	-
C.o.g. without liquid salt, full [SV]	mm	290	450	500	800	820	700
C.o.g. with salt liquid salt, empty [SV]	mm	-	500	-	850	870	-
Hopper height at sides [HA]	mm	545	735	619	775	775	690
Unladen weight without liquid salt	kg	290	310	390	428	430	445
Unladen weight with liquid salt	kg	-	390	-	518	520	-
Unladen weight, twin cham.	kg	310	-	420	-	-	475
Unladen weight, twin cham./liquid salt	kg	-	-	-	-	-	-
Spread coverage, salt	g/m²	5-40	5-40	5-40	5-40	5-40	5-40
Spread coverage, grit/sand	g/m²	10-250	10-250	10-250	10-250	10-250	10-250
Spread coverage, brine	%	-	1-30	-	1-30	1-30	-
Spread width	m	1-6	1-6	1-6	1-6	1-6	1-6

Technical data		W10b	W11	W13	W13n	W15	W18
Hopper volume, dry medium	m³	1,0	1,1	1,3	1,3	1,5	1,8
Hopper volume, brine	l	430	-	-	-	640	640
Hopper length [L]	mm	1.990	1.790	1.990	1.990	2.130	2.130
Overall length without brine [B]	mm	-	1.200	1.450	1.200	1.500	1.500
Overall length with brine [B]	mm	1.450	-	-	-	1.500	1.500
C.o.g. without liquid salt, full [SV]	mm	-	850	950	950	1.000	1.040
C.o.g. with salt liquid salt, empty [SV]	mm	950	-	-	-	1.000	1.040
Hopper height at sides [HA]	mm	650	619	600	660	763	888
Unladen weight without liquid salt	kg	-	480	550	510	580	604
Unladen weight with liquid salt	kg	690	-	-	-	680	704
Unladen weight, twin cham.	kg	-	510	585	545	615	646
Unladen weight, twin cham./liquid salt	kg	690	-	-	-	715	746
Spread coverage, salt	g/m²	5-40	5-40	5-40	5-40	5-40	5-40
Spread coverage, grit/sand	g/m²	10-250	10-250	10-250	10-250	10-250	10-250
Spread coverage, brine	%	1-30	-	-	-	1-30	1-30
Spread width	m	1-6	1-6	1-6	1-6	1-6	1-6

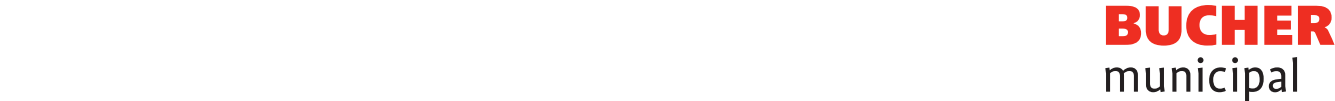
Bucher Municipal
Bucher Municipal Wernberg GmbH
Daimlerstraße 18
DE - 92533 Wernberg-Köblitz
tel. +49 9604 932 670
fax. +49 9604 932 6749
info-wernberg.de@buchermunicipal.com

www.buchermunicipal.com

Bucher Municipal has been committed for decades to keep roads, streets and airports free of snow and ice. Our range of high-quality spreaders, snow-ploughs and airport equipment offers municipalities, contractors and airports all around the world solutions for all areas of winter maintenance. Bucher Municipal supplies customer-orientated solutions for an efficient and environment-friendly winter service.



Driven by better

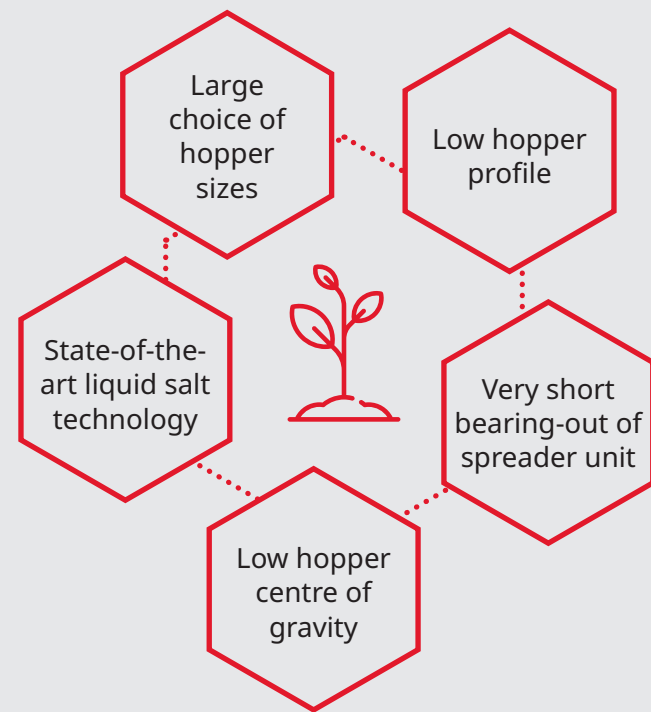


Husky

with auger system for small implement carriers



Version 01.08/2021 - We reserve the right to make changes with regard to technology and design. The illustrations may contain special and additional equipment that is not part of the standard scope of delivery.



High quality spreaders for small implement carriers

The spreaders of the Husky series have an innovative hopper design and are available in various hopper sizes. This makes them ideal for mounting on a wide variety of municipal carrier vehicles. Thanks to the low hopper design and the low hopper centre of gravity, the vehicle-device combination is ideal for winter maintenance with small implement carriers.

The Husky spreaders are available in hopper sizes from 0.4 m³ to 1.8 m³ with and without pre-wetting salt equipment. The Husky series is available as Husky V and Husky W version, the difference being the number of augers. The Husky W series spreaders are equipped with two augers and can also be delivered in a double-chamber version on request.

Available standard equipment

- Self-supporting hopper construction
- Vehicle-specific fastening elements
- Vehicle splash protection
- Mechanical spread pattern adjustment
- Parking legs for unloaded spreader
- Full travel-dependent control via sensors

Available optional equipment

- Supreme painting C5-M
- Infrared camera
- Special vehicle frames
- Lifting points for crane for unladen spreader
- Stainless steel auger
- Stainless steel hopper
- Folding roof with stainless steel frame and canvas cover made of high-strength PVC



Innovative control technology

EcoTron (optional): The basic solution with 4.3" graphic display.

EcoTron Plus (optional): Upgrade of EcoTron including pre-wetted salt spreading.

EcoSat (optional): Innovative high-end solution with large 7" graphic display and clearly arranged operator menu.

Brine tank (optional)
Material made of resistant Polyethylene, with vent filter, filler neck and optical level indicator.

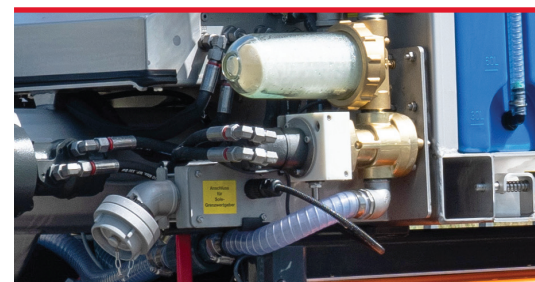


Safety cover

Made of stainless steel and heavy-duty GFK material in lightweight construction.

Ladder (optional)

Full stainless steel construction and available in various sizes.



Liquid salt pump unit (optional)

Consisting of brine pump, XXL filter, 3-way valve and C-connection, stainless steel piping.

Skid unit

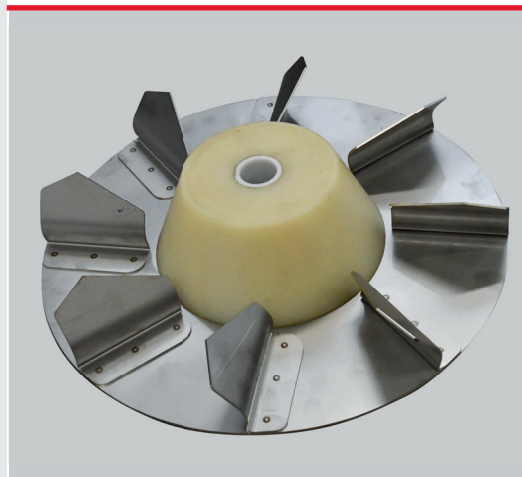
Full stainless steel construction.
Height adjustable and damp-proof.

Spreading unit

Consisting of a stainless steel spreader disc with a special plastic cone, highly wear-resistant plastic covering screen. Spreading width 1 up to 6 meters.

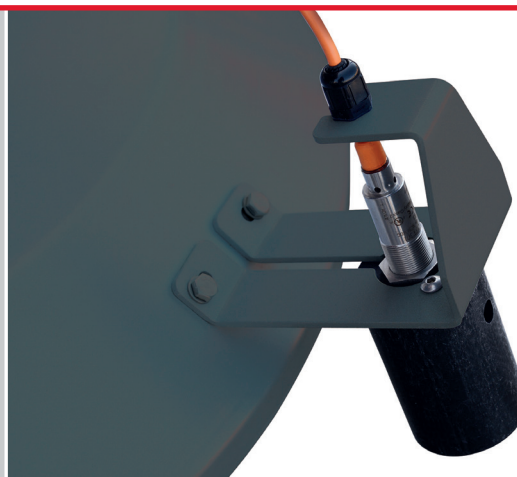
Mechanical parking system with hand crank for unloaded spreaders

Mechanical or hydraulic parking systems for parking the loaded spreader are also available as an option.



Spreading disc 2 - 8 m (optional)

The stainless steel spreading disc is covered by a highly wear-resistant plastic covering screen. Spreading width 2 up to 8 meters.



ESK - electronic spread control (optional)

Contactless, infrared technology for monitoring the spreading. The housing is waterproof according to IP 67.



ESBV - electronic spread pattern adjustment (optional)

With powerful actuator and potentiometer for symmetrical/asymmetrical adjustment of the spreading pattern. Waterproof according to IP 67.



Sensor technology

Target/actual value comparison of spreading disc, auger and pre-wetted salt pump. The sensors are sealed according to IP 67.



Double chamber version (optional)

The Husky W series is available as double chamber version. Scope of delivery: stainless steel segregation wall, hydraulic block 3-fold, monitoring of both augers.



Mounting on trailer chassis (optional)

Optional single-axle or two-axle trailer, with vehicle-independent propulsion on request.